

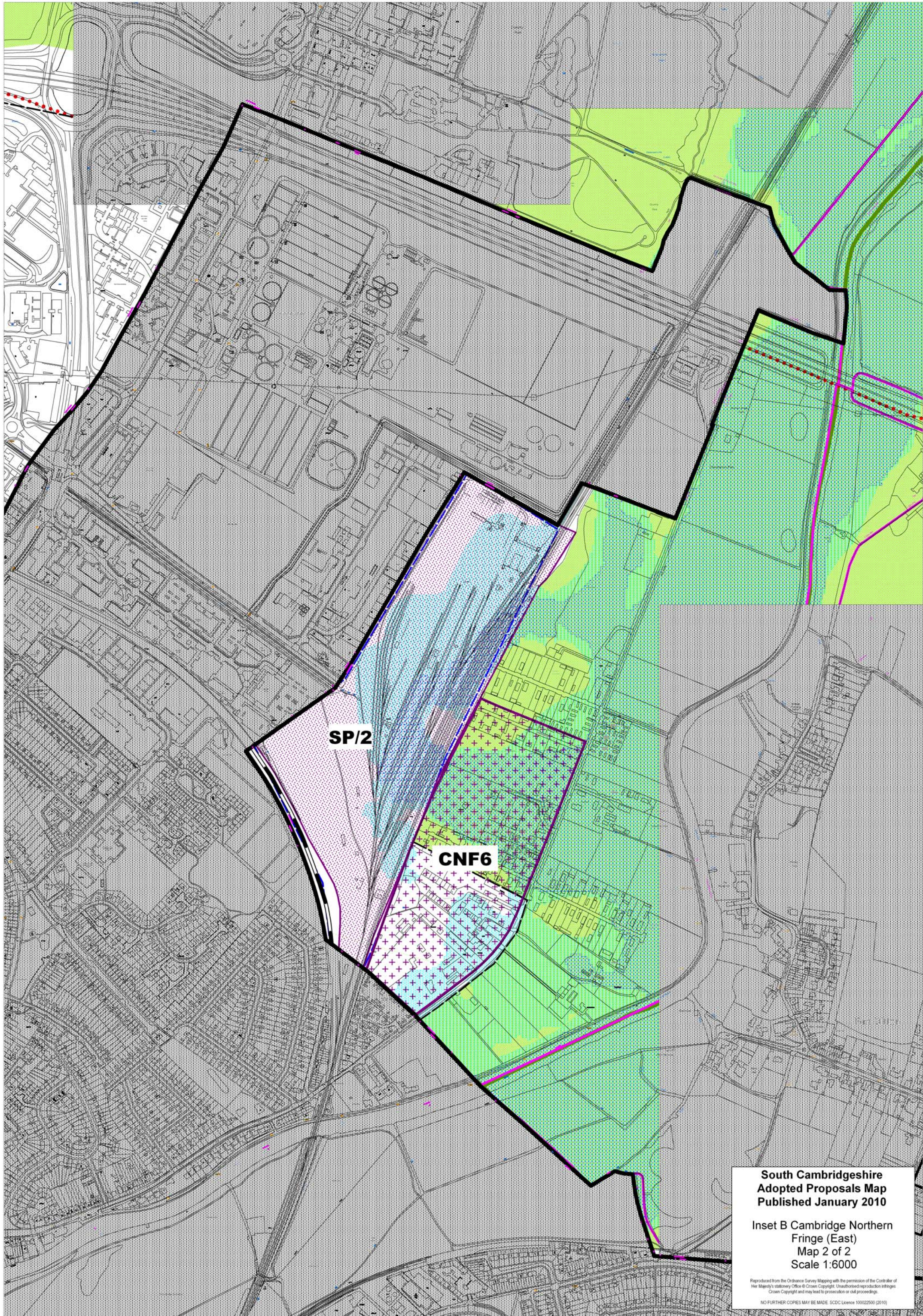
SPI1

**South Cambridgeshire
Adopted Proposals Map
Published January 2010**

**Inset B Cambridge Northern
Fringe (West)
Map 1 of 2
Scale 1:5000**

Reproduced from the Ordnance Survey Mapping with the permission of the Controller of Her Majesty's Stationery Office © Crown Copyright. Unauthorised reproduction infringes Crown Copyright and may lead to prosecution or civil proceedings.

NO FURTHER COPIES MAY BE MADE. SDCS Licence 100022500 (2010)



SP/2

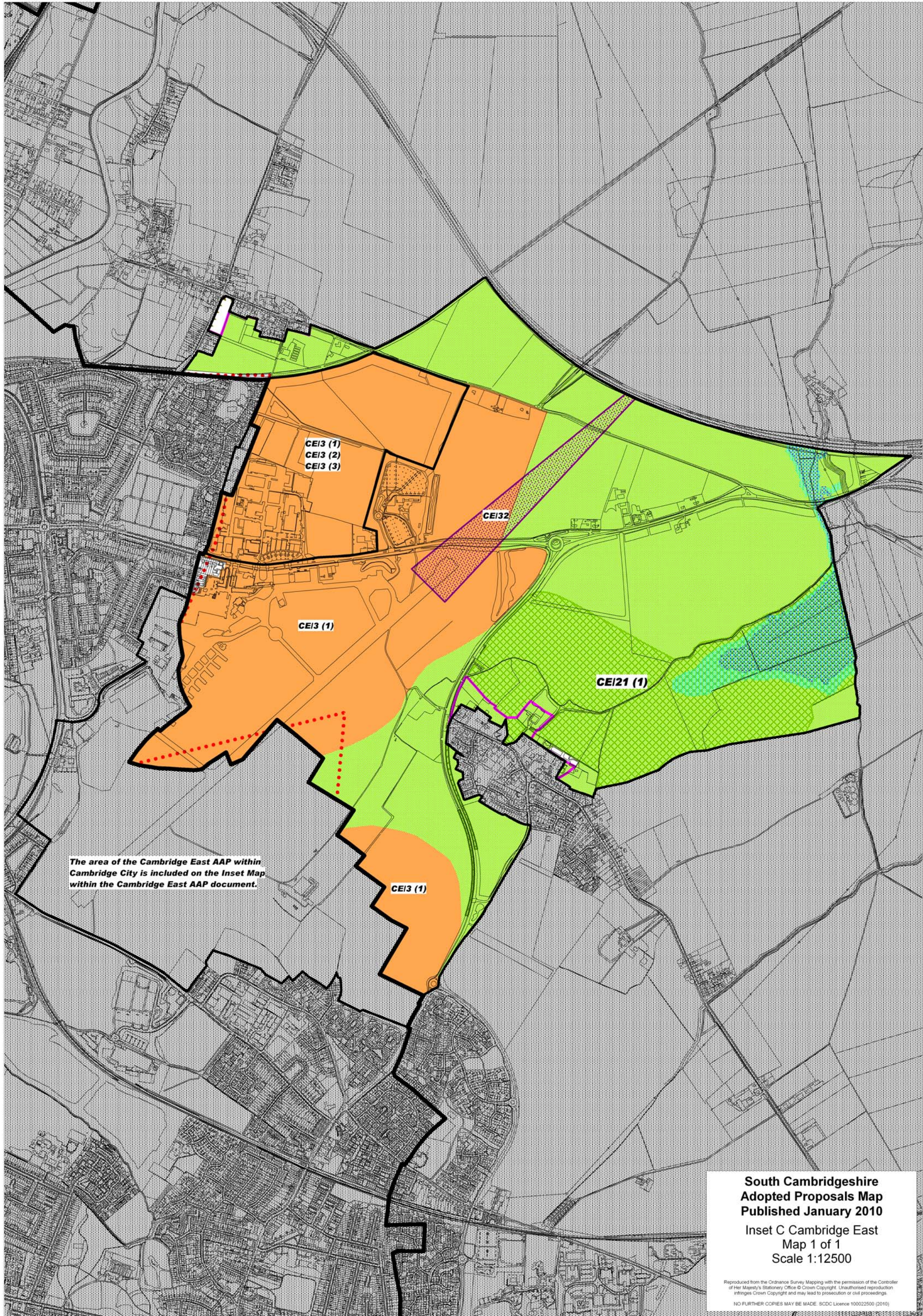
CNF6

**South Cambridgeshire
Adopted Proposals Map
Published January 2010**

Inset B Cambridge Northern
Fringe (East)
Map 2 of 2
Scale 1:6000

Reproduced from the Ordnance Survey Mapping with the permission of the Controller of Her Majesty's Stationery Office © Crown Copyright. Unauthorised reproduction infringes Crown Copyright and may lead to prosecution or civil proceedings.

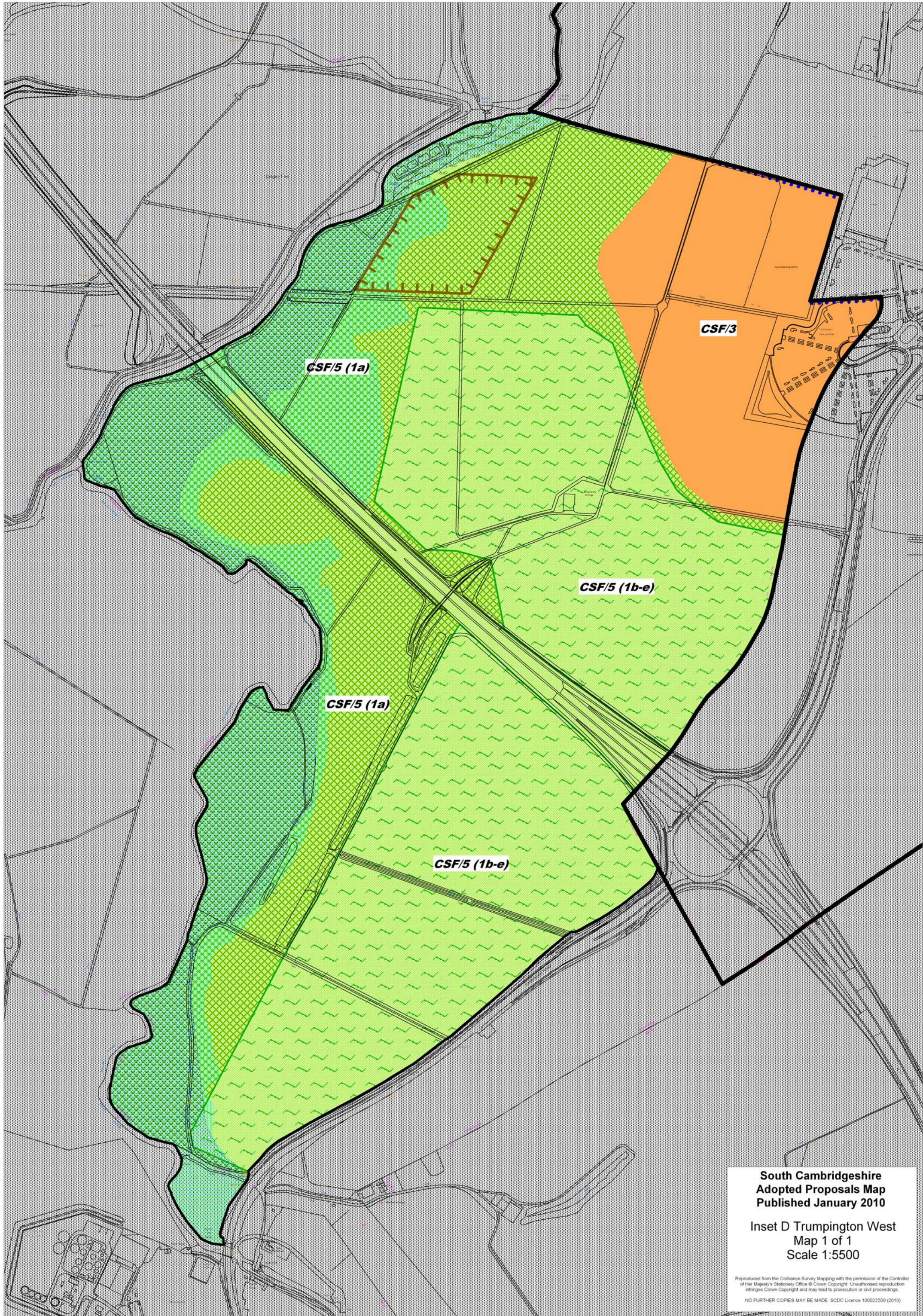
NO FURTHER COPIES MAY BE MADE. SDCS Licence 100022500 (2010)



The area of the Cambridge East AAP within Cambridge City is included on the Inset Map within the Cambridge East AAP document.

**South Cambridgeshire
Adopted Proposals Map
Published January 2010**
Inset C Cambridge East
Map 1 of 1
Scale 1:12500

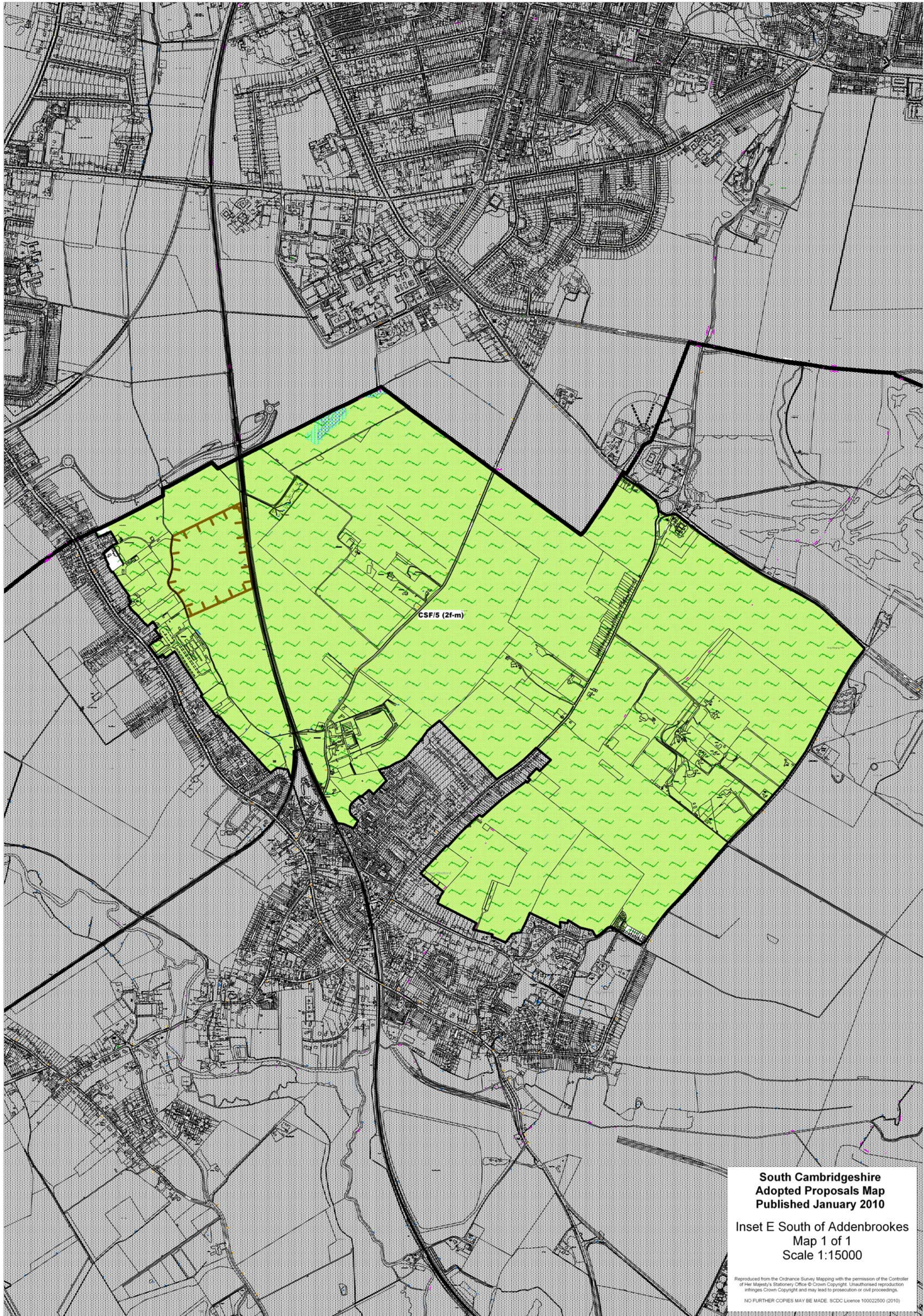
Reproduced from the Ordnance Survey Mapping with the permission of the Controller of Her Majesty's Stationery Office © Crown Copyright. Unauthorised reproduction infringes Crown Copyright and may lead to prosecution or civil proceedings.
NO FURTHER COPIES MAY BE MADE. SICDC Licence 100022500 (2010)



**South Cambridgeshire
Adopted Proposals Map
Published January 2010**

**Inset D Trumpington West
Map 1 of 1
Scale 1:5500**

Reproduced from the Ordnance Survey Mapping with the permission of the Controller of Her Majesty's Stationery Office © Crown Copyright. Unauthorised reproduction infringes Crown Copyright and may lead to prosecution or civil proceedings.
NO FURTHER COPIES MAY BE MADE. SDCDC Licence 100022500 (2010)



**South Cambridgeshire
Adopted Proposals Map
Published January 2010**

Inset E South of Addenbrookes
Map 1 of 1
Scale 1:15000

Reproduced from the Ordnance Survey Mapping with the permission of the Controller of Her Majesty's Stationery Office © Crown Copyright. Unauthorised reproduction infringes Crown Copyright and may lead to prosecution or civil proceedings.
NO FURTHER COPIES MAY BE MADE. SDCD Licence 100022500 (2010)



NW/4

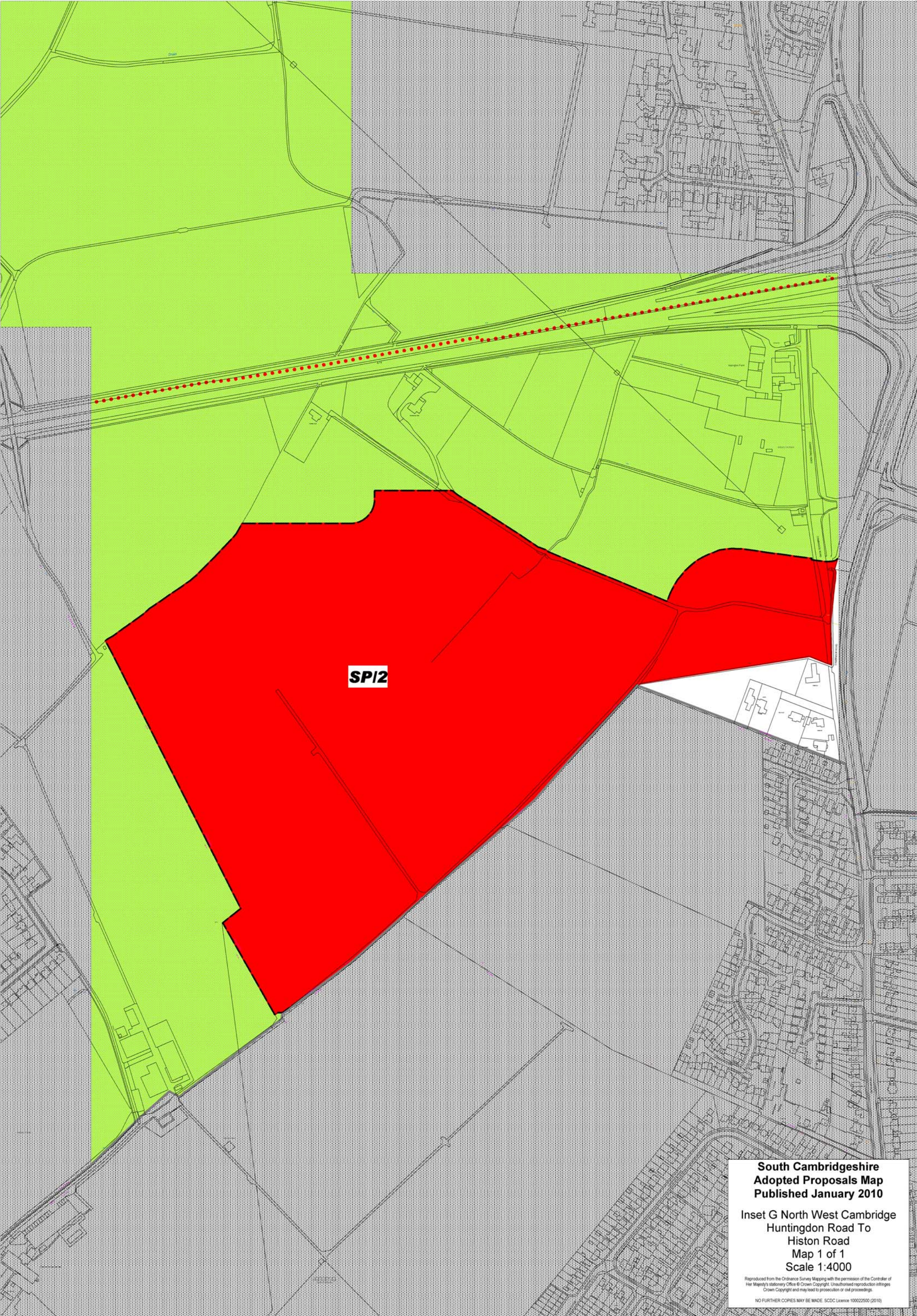
The area of the North West Cambridge AAP within Cambridge City is included on the Inset Map within the North West Cambridge AAP document.

**South Cambridgeshire
Adopted Proposals Map
Published January 2010**

**Inset F North West Cambridge
Area Action Plan
Map 1 of 1
Scale 1:8000**

Reproduced from the Ordnance Survey Mapping with the permission of the Controller of Her Majesty's Stationery Office © Crown Copyright. Unauthorised reproduction infringes Crown Copyright and may lead to prosecution or civil proceedings.

NO FURTHER COPIES MAY BE MADE. SCDC Licence 100022500 (2010)



SPI2

**South Cambridgeshire
Adopted Proposals Map
Published January 2010**

**Inset G North West Cambridge
Huntingdon Road To
Histon Road
Map 1 of 1
Scale 1:4000**

Reproduced from the Ordnance Survey Mapping with the permission of the Controller of Her Majesty's Stationery Office © Crown Copyright. Unauthorised reproduction infringes Crown Copyright and may lead to prosecution or civil proceedings.

NO FURTHER COPIES MAY BE MADE. SCDC Licence 100022500 (2010)